

D.L. George & Sons Mfg.

13321 Midvale Road, Waynesboro, Pa. 17268

Phone 717-765-4700 800-765-1246

Fax 717-765-4734

www.dlgeorge-sons.com

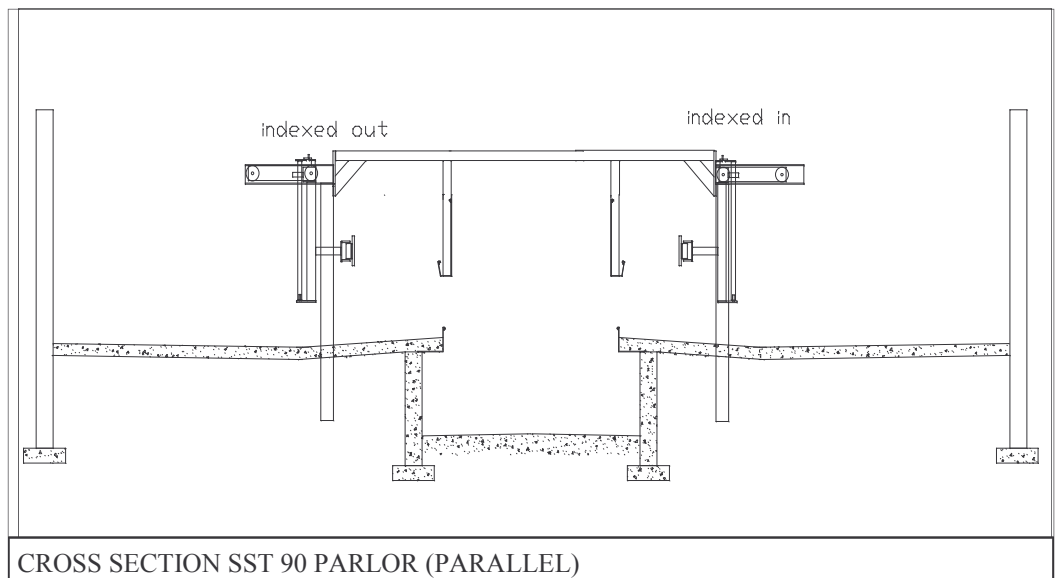
KXL 90 PARLOR (Parallel)



D. L. George & Sons Mfg.'s new KXL Parlors are the fastest way to move cows through your milking parlor. You move the cows in style too...with features like stainless steel construction, individual release, group indexing all standard.

The KXL looks great and lasts great because its made from the finest materials. Sophisticated construction techniques are used to provide the combination of structural strength and corrosion protection. Stainless steel has excellent corrosion resistance but its structural strength is not as good as carbon steel. We use stainless steel for all of the individual stall components but on the structural frame of the parlor, where greater tensile strength is required, the KXL has structural grade carbon steel tubing that is coated with a heavy coating of thermal sprayed galvanized steel. It provides great protection. All gutter and curbing is formed from 304 grade stainless steel. The KXL works great because it has the most comprehensive set of features available in a milking parlor today. The KXL has a fully suspended design for easier and faster clean up and unrestricted cow access and visibility. Individual exit gates get the cows out of the parlor fast. Individual release allows the operator to release one cow at a time for complete flexibility in herd management. Group Indexing allows the operator to move the whole stall section in and out to accommodate different sized herds or groups of cows and it makes it easy for the operator to reach the cows. Passive individual indexing gives larger cows the little bit of extra room that they need. By sloping the concrete up towards the back of the cow they tend to back up toward the gutter automatically.

The KXL 90 is the parallel version of the heavy duty KXL parlor family. The KXL 90 provides all of the advantages of parallel parlor design including: increased cow throughput since both the cows and the operator have less walking required, reduced facilities space requirements, and improved operator safety.



CROSS SECTION SST 90 PARLOR (PARALLEL)

The parlor comes with many features as standard equipment that about the only options are entrance gates and a shroud to mount the milking equipment of your choice. D. L. George & Sons Mfg. will even customize the shroud by cutting the holes you need for your meter boxes etc.

Parlor installation has been made even easier. Air or hydraulic power systems are available to suit your special requirements. Our installation offerings include optional factory supervised installation.

Add a Vertical Lift Crowd Gate and Parlor Entrance Lanes from D. L. George & Sons Mfg. and you will have a combination of equipment designed to maximize operator productivity.

D.L. George & Sons Mfg.

13321 Midvale Road, Waynesboro, Pa. 17268

Phone 717-765-4700 800-765-1246

Fax 717-765-4734

www.dlgeorge-sons.com

**KXL 90 PARLOR
(Parallel)****Features and Benefits**

<u>Feature</u>	<u>Benefit</u>
Parallel Design	Less facilities space and reduced environmental cost over time (heating, air conditioning)
Suspended design	Ease of installation, ease of cleanup, less places for corrosion to start
Stall sections assembled at plant	Ease of installation, reduced installation time and expense
Kick rail below gutter	Operator safety
Elevated Gutter	Catches most manure before it hits the floor, keeps parlor cleaner
Group indexing	Allows for groups of smaller cows such as heifers to be indexed back together
Individual release option	Operator can easily separate one cow from the rest for better herd management
Structural tubing legs and	Structural strength is much greater than 4" pipe, long term durability suspension system
High tensile strength square	Better strength and corrosion resistance than 2" pipe, since tubing is square it is much easier to tubing weld than round pipe and you can expect greater durability at weld joints.
Cantilevered curbing	Ease of installation. Keeps milk lines and meters etc. out of the way of the operator.
UHMW Bushings on gates	No lubrication required means lower maintenance and greater long-term durability
UHMW Sequencing paddle	Provides solid gate-like effect to make training cows easier. Very easy to clean
Stainless Springs on paddle	Easily installed.
Hydraulic operating unit	Trouble free operation.
Factory supervised installation	Ease of installation, reduced installation cost. Take advantage of years of experience with option parallel parlor installations to handle those 'unique' challenges

D.L. George & Sons Mfg.

13321 Midvale Road, Waynesboro, Pa. 17268

Phone 717-765-4700 800-765-1246

Fax 717-765-4734

www.dlgeorge-sons.com

KXL 90 PARLOR (Parallel)



Key Design Specifications

Materials:

All 2" Square tubing is 12 ga, with galvanized finish or 304

Main Support Columns 6" x 6" Square tube with thermal spray galvanized

Cross Support and Gutter, supported by 6 x 3 or 6 x 2 tubes with thermal spray galvanized.

Stall Section Beams 6" x 6" Square tube with thermal spray galvanized

All other steel components have either thermal spray galvanized finish -or- 2 part corrosion resistant paint finish

Curb and Gutter are either 11 ga Galvanized sheet or 11 ga Type 304 Stainless Steel

Sequencing Gate frame is Square Tubing with galvanized finish or stainless

Sequencing Gate Paddle is 1" thick UHMW or 304 Stainless Pipe Paddle

Height Recommended	96"
Minimum Height For Standard Configuration	87"
Minimum with Modifications	78"
Length of Parlor recommended	29" x # of stalls plus 24"
Length of Parlor Minimum	29" x # of stalls plus 12"
With Entrance Gate	Add 12"
Width of Cow Platform Recommended	15.5 feet
Stall width recommended	29" ctr-to-ctr
Stall width minimum	29" ctr-to-ctr

Options available (custom pricing)

Shroud on back of gutter to mount equipment in

Smaller stalls for Jersey cows

Stainless grate to keep cows tails out of gutter

Slide-type entrance gate

Custom shapes on curbing

Custom shapes on gutter

Splash shield with no gutter

Custom controls packages