

## D.L. George & Sons Mfg.

13321 Midvale Road, Waynesboro, Pa. 17268

Phone 717-765-4700 800-765-1246

Fax 717-765-4734

www.dlgeorge-sons.com

# KXL 45 PARLOR (Traditional Herringbone)



Super Sonic Transport jets (KXL's) like the Concorde are the fastest way to move passengers across the Atlantic. D. L. George & Sons Mfg.'s new KXL Parlors are the fastest way to move cows through your milking parlor. You move the cows in style too....with features like stainless steel construction, individual release, individual indexing and group indexing all standard. The KXL's are a family of parlors which share many characteristics whether you pick the KXL 90 (parallel), KXL 70 (30" Center herringbone) or KXL 45

The KXL looks great and lasts great because its made from the finest materials. Sophisticated construction techniques are used to provide the combination of structural strength and corrosion protection. Stainless steel has excellent corrosion resistance but its structural strength is not as good as carbon steel.

We use stainless steel for all of the individual stall components but on the structural frame of the parlor, where greater tensile strength is required, the KXL has

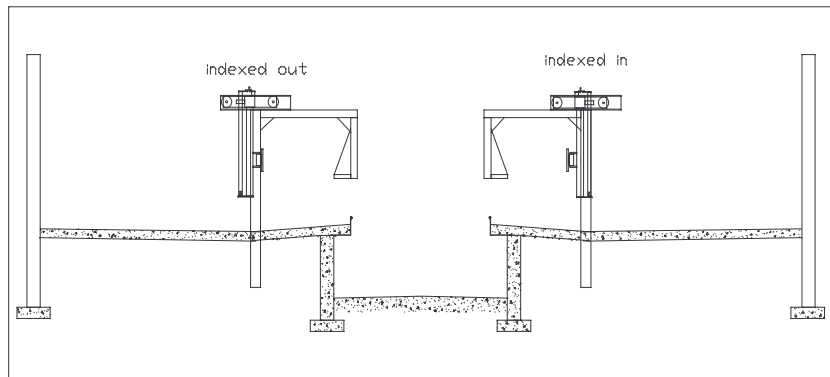
structural grade carbon steel tubing that is coated with a heavy coating of thermal sprayed galvanized. It provides great protection. All gutter and curbing is formed from 304 grade stainless steel.

The KXL works great because it has the most comprehensive set of features available in a milking parlor today. The KXL has a fully suspended design for easier and faster clean up and unrestricted cow access and visibility. Individual exit gates get the cows out of the parlor fast. Individual release allows the operator to release one cow at a time for complete flexibility in herd management. Group Indexing allows the operator to move the whole stall section in and out to accomodate different sized herds or groups of cows and it makes it easy for the operator to reach the cows. A premium quality stall at an affordable price. Consider the KXL parlor!

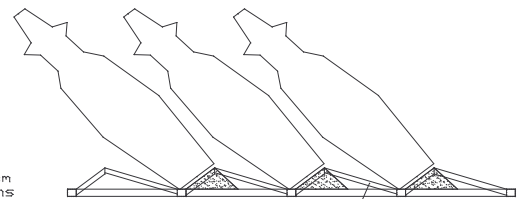
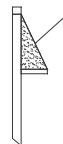
The KXL 45 is the traditional herringbone version of the heavy duty KXL parlor family. It can be customized to any size of stall e.g. 36 - 48" centers. The parlor comes with so many features as standard equipment that about the only option available is a shroud to mount the

milking equipment of your choice. D. L. George & Sons Mfg. will even customize the shroud by cutting the holes you need for your meter boxes etc. Parlor installation has been made easier. Air or hydraulic power systems are available to suit your special requirements. The

unique straight-thru splash shield in the back makes it easy for cows to load without hitting their pins because the shield slopes away from the cow. This design also positions the cow as close as possible to the operator.



Sloped Splash Shield gives cows more room to load, don't hit pins



Clear view of cow

Splash Shield Available in Stainless or Galvanized

